



# THE POSSESSION REPORT

POWERED BY P*B*iR

THE PORTAL INTAKE REPORT · A HIGH-MAJOR PROGRAM — 2026-27 INCOMING CLASS

*A real certified report — identities retracted.*

## This is a real report. The names just aren't.

Everything on these pages — every grade, every ranking, every projection — is **actual certified data** from a real Division I program's incoming transfer class. We've **retracted the player names, schools, and conferences** to protect that team's identity and their competitive edge. What you're looking at is the engine, not their roster.

### WHAT THIS REPORT DOES

Every transfer you sign, graded across his **entire previous season** — possession by possession, on one certified yardstick. It ranks each player against his whole former league, projects his impact at the minutes *you'll* give him, maps every shot, and tells you who you can lean on versus who swings. Not box-score averages. Not highlight tape. What he actually produced, certified.

The headline finding from this sample: **the player everyone was planning the offense around graded third on his own incoming class.** The possessions, not the press release, told that story — and that's the kind of edge a staff gets before the first practice instead of discovering it in January.

### Want this on YOUR transfers?

Go to [thepossessionreport.com](https://thepossessionreport.com), click **Free Portal Intake Report**, register your program — and we'll build and send your team's report on the players *you* signed. Your first one is on us.

Take ten minutes with the pages that follow. Then ask yourself one question: **do you know this much about the players you just brought in?**

— The Possession Report, powered by P*B*iR



EXPANDED EDITION · PORTAL INTAKE FORMAT — FIRST OF ITS KIND

# The Class, Certified

EVERY PORTAL ADDITION'S COMPLETE 2025-26 SEASON AT HIS PREVIOUS SCHOOL —  
RUN THROUGH ONE ENGINE, ONE YARDSTICK, SO THE CLASS CAN FINALLY BE COMPARED  
HONESTLY.

PLAYER	POS · SIZE · CLASS	PREVIOUS PROGRAM	CERTIFIED RECORD
<b>Player A</b>	SAMPLE DATA	Mid-Major A (Mid-Major A)	33/34 cert · 31 played
	SAMPLE DATA	Mid-Major B (Mid-Major B)	29/33 cert · 28 played
<b>Player C</b>	SAMPLE DATA	Mid-Major C (Mid-Major C)	30/32 cert · 30 played
<b>Player D</b>	SAMPLE DATA	Mid-Major D (Mid-Major D)	29/34 cert · 29 played
<b>Player E</b>	SAMPLE DATA	Mid-Major E (Mid-Major E)	29/31 cert · 29 played
<b>Player F</b>	SAMPLE DATA	Mid-Major F (Mid-Major F)	33/35 cert · 31 played
<b>Player G</b>	SAMPLE DATA	Mid-Major B (Mid-Major B)	34/34 cert · 34 played
<b>Player H</b>	SAMPLE DATA	Mid-Major G (Mid-Major G)	28/32 cert · 17 played
<b>Player I</b>	SAMPLE DATA	Mid-Major H (Mid-Major H)	29/31 cert · 28 played
<b>Player J</b>	SAMPLE DATA	High-Major (High-Major)	40/40 cert · 14 played

## WHAT'S INSIDE — THE FOUR PARTS

### PART 1 · PAGES 1-2

#### The Letter & The Class

What a possession-certified intake is, and the verified roster.

### PART 2 · PAGES 3-5

#### The Findings

The certified class table, the verdict, and the floor-ceiling map — including the finding that reorders the depth chart.

### PART 3 · PAGES 6-15

#### The Players

One certified page per man: identity, trend, consistency, verdict — ranked by what the engine found.

### PART 4 · PAGES 16-22

#### The Roster Assembled

The league standings, the crystal ball, what it adds up to, the honest holes, the anticipated read, the spoken summary, and the certification ledger.

Film tells you what he looks like.  
Possessions tell you what he's worth.

**KNOW WHAT YOU BOUGHT BEFORE THE FIRST PRACTICE.**



**PART 2 · THE FINDINGS** **THE CLASS, ONE YARDSTICK · PAGES 3–5**

**THE CERTIFIED CLASS TABLE — READ THIS PAGE FIRST**

# The Class at a Glance

— ranked by the engine, not the headlines

Each man's complete certified 2025–26 season, sorted by what the possessions found — not by points per game, not by the press release. The order of this table is the first finding.

PLAYER (PREV.)	GP	SEASON PBiR	PER GAME	PER MIN	LED TEAM	NEG. GAMES	HI / LO
<b>Player A</b> (Mid-Major A)	31	<b>+1,020</b>	<b>+32.9</b>	+1.06	20	<b>0</b>	+61 / +5
(Mid-Major B)	28	<b>+627</b>	<b>+22.4</b>	+0.76	13	<b>0</b>	+64 / +3
<b>Player C</b> (Mid-Major C)	30	<b>+471</b>	<b>+15.7</b>	+0.86	3	2	+40 / -4
<b>Player D</b> (Mid-Major D)	29	<b>+404</b>	<b>+13.9</b>	+0.44	7	3	+34 / -4
<b>Player E</b> (Mid-Major E)	29	<b>+391</b>	<b>+13.5</b>	+0.41	6	4	+40 / -10
<b>Player F</b> (Mid-Major F)	31	<b>+345</b>	<b>+11.1</b>	+0.57	4	7	+60 / -11
<b>Player G</b> (Mid-Major B)	34	<b>+231</b>	<b>+6.8</b>	+0.18	3	9	+41 / -17
<b>Player H</b> (Mid-Major G)	17	<b>+55</b>	<b>+3.2</b>	+0.12	0	6	+15 / -17
<b>Player I</b> (Mid-Major H)	28	<b>+47</b>	<b>+1.7</b>	+0.08	0	14	+18 / -13
<b>Player J</b> (High-Major)	14	<b>-6</b>	<b>-0.4</b>	-0.17	0	4	+2 / -5

**WHOLE CLASS PBiR, ADDED UP**  
**+3,585**  
 271 certified player-games

**ZERO-NEGATIVE SEASONS**  
**2**  
 Player A ·

**GAMES CERTIFIED**  
**314/336**  
 withheld games listed on p20

**The first read:** notice who's on top. It isn't the 20-points-a-game headliner — it's the Mid-Major freshman, by nearly twenty a night. The next two pages explain why that's the most important thing this report has to say.



THE FINDINGS · 2 OF 3 — THE VERDICT ON THE CLASS

# The Verdict

— five findings that reorder the board

## The crown jewel isn't who you think it is.

The engine graded all ten seasons on one yardstick. The order changed.

THE FINDING	THE EVIDENCE	WHAT IT MEANS FOR THE STAFF
1. Player A is the jewel	+32.9/gm · 0 negative games · led his prior school 20 of 31 · +1.06/min	A floor-never-cracks season as a freshman — build the interior around him, not behind him
2. is the steal	+22.4/gm · 0 negative games · led his prior school 13 times	The quietest signing certifies second in the class — play him early and often
3. Player D certifies as volume	20.6 ppg → +13.9/gm, +0.44/min, 3 negative nights	A good player, honestly graded — a weapon in the offense, not the engine of it
4. Player C's rate is real	limited minutes — but +0.86/min, 2nd-best in the class	The center answer may already be on the roster; the minutes were the limit, not the player
5. Player G is a swing piece	+41 high, -17 low, 9 negative games	Elite shooting nights and real cold ones — manage him, don't depend on him

**The honest frame:** every one of these seasons certified against mid-major competition — Mid-Major, Mid-Major, Mid-Major, Mid-Major, Mid-Major, Mid-Major, Mid-Major. The engine grades what happened, truthfully; it does not pretend a Mid-Major possession is an ACC possession. What survives the level jump best, historically, is exactly what the top of this class is made of: rebounding, rim pressure, drawn fouls, and a floor that doesn't crack. What survives worst is volume scoring against length that suddenly arrives. Read finding 1 and finding 3 again with that lens.

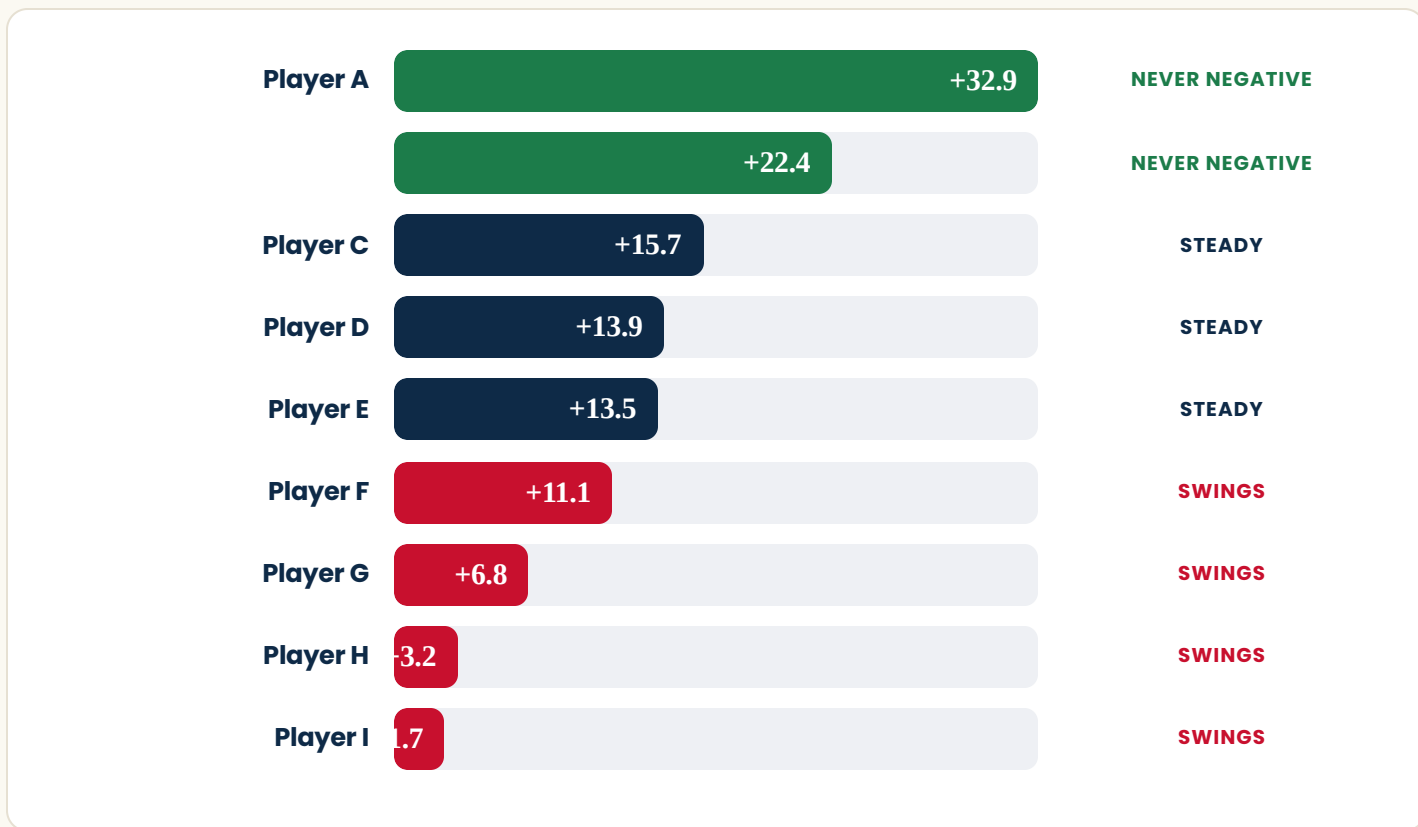


THE FINDINGS · 3 OF 3 — THE VALUE BOARD

# The Value Board

— who you can lean on, ranked

Every certified player with a real sample, ranked top to bottom by **certified impact per game** — the longer the bar, the more he produced. The color is the second question every staff asks: **green = never graded negative, navy = steady, red = swings both ways**. Read it like a depth chart: the names up top with green bars are who you lean on when the game is even.



**LEAN ON THEM**  
 Player A ·  
 top of the board, never negative

**STEADY ROTATION**  
 Player C · Player D ·  
 Player E  
 positive nightly, occasional dip

**MANAGE THE MATCHUP**  
 Player F · Player G  
 win specific nights, not every night

**How to read it:** a rebuilt roster doesn't need ten stars — it needs to know **which names it can trust when everything's even**. This board answers it at a glance: the long green bars at the top are the foundation, the navy bars are the dependable middle, and the red bars are the swing pieces you deploy by matchup. (Player H and Player J carry samples too thin to rank honestly — their pages say so.)



PART 3 · THE PLAYERS ONE CERTIFIED PAGE PER MAN · PAGES 6-15

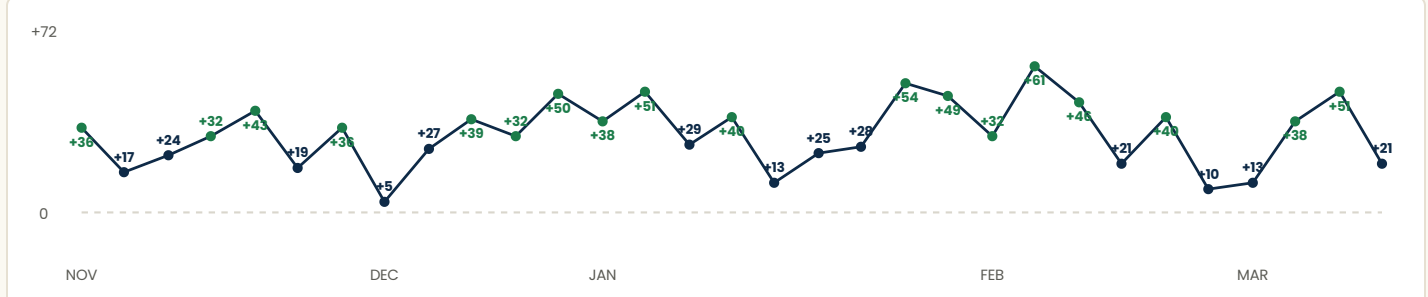
**HOW TO READ EVERY PLAYER PAGE**  
 Every page grades one player by PBIR — the PlayBack Intelligence Rating. It scores all 15 things a player does on the floor (baskets, rebounds, assists, steals, blocks, drawn fouls — and the misses, turnovers, and fouls that cost). A **positive number means he helped his team that game; a negative number means he cost them.** The big card is his **season total**; divide by games for his per-game number. We never show the point values — only the certified result.

THE PLAYERS · PLAYER A — F · SO · FROM MID-MAJOR A (MID-MAJOR A)

**Player A** — Forward · archetype profile

<b>SEASON TOTAL PBIR</b> <b>+1,020</b> <small>all 31 games added up · +32.9 per game · +1.06 per minute</small>	<b>GAMES HE HURT HIS TEAM</b> <b>0</b> <small>nights his PBIR finished below zero, of 31</small>	<b>TEAM-BEST PBIR</b> <b>20</b> <small>nights he led all teammates · best +61, worst +5</small>	<b>BOX SCORE / GAME</b> <b>14.1 / 10.4</b> <small>points / rebounds per game</small>
---	--	---	--

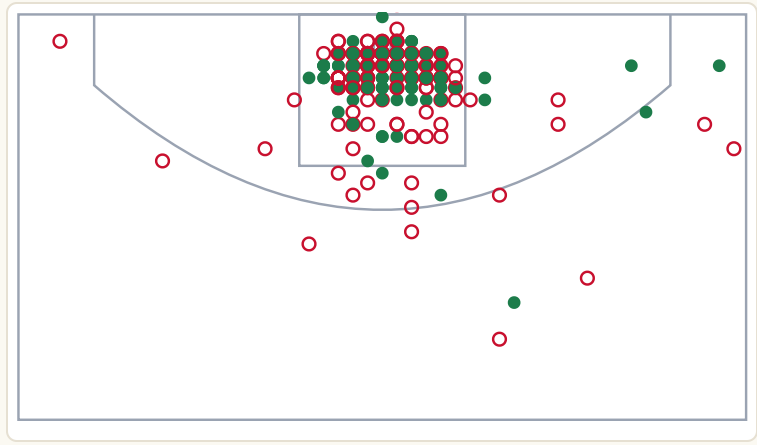
THE SEASON, GAME BY GAME — EACH DOT IS ONE CERTIFIED GAME



Each dot is labeled with his certified PBIR for that game, in order played. The dashed line is zero; **green** = +30 or better, **navy** = a positive night, **red** = below zero. Across all 31 certified games, the line never crosses below zero — the data shows no negative night all season.

**Consistency — the game-to-game read: ELITE CONSISTENCY** · typical night within ±13.9 of his +32.9 average · #1 most consistent in the class

THE SHOT MAP — • MADE ○ MISSED



Where the green clusters is where the offense should find him — design his touches to this map.

WHERE HE RANKS IN HIS LEAGUE · MID-MAJOR A

**#2 of 74**

RANKED 2nd OF THE 74 PLAYERS HE FACED

Of the 74 Mid-Major A players he actually shared the floor with last season (anyone he met at least twice), his certified impact per game ranked 2nd. That is the top 99% — near the very top of everyone he faced.

**SHOT SELECTION**  
 318 attempts inside the arc · 7 from three

THE IDENTITY — WHAT BUILT THE NUMBER (SEASON COUNTS)

- Scoring #12 Mid-Major A
- Rebounding #11 Mid-Major A
- Assists #35 Mid-Major A
- Made 2s 180
- Made 3s 2
- Off. reb 132
- Def. reb 191
- Assists 38
- Drawn fouls 66
- Blocks 49
- Steals 22

**THE VERDICT — THE CROWN JEWEL.**  
 A freshman season with the rarest certified trait — zero negative games — while leading his team two of every three nights. The interior of this rebuild starts with him.

THE PBIR PROJECTION — HIS CERTIFIED RATE (+1.057/MIN) HELD CONSTANT ACROSS MINUTES

<b>ACTUAL LAST YEAR</b> <b>+32.9</b> <small>at 31.1 min/game</small>	<b>PBIR IF HE PLAYS 20 MIN</b> <b>+21.1</b>	<b>PBIR IF HE PLAYS 30 MIN</b> <b>+31.7</b>	<b>PBIR IF HE PLAYS 35 MIN</b> <b>+37</b>
--	--	--	--

Straight-line projection: certified PBIR/min × minutes — the data's estimate at each workload, not a guarantee. Gold = a jump above his certified usage.

**What the numbers project:** the data shows a +32.9 floor with no negative games in 31 played — the most stable high-impact line in the class. Numbers this consistent at his age historically hold or climb with a featured role; nothing in the data points to a ceiling yet reached.

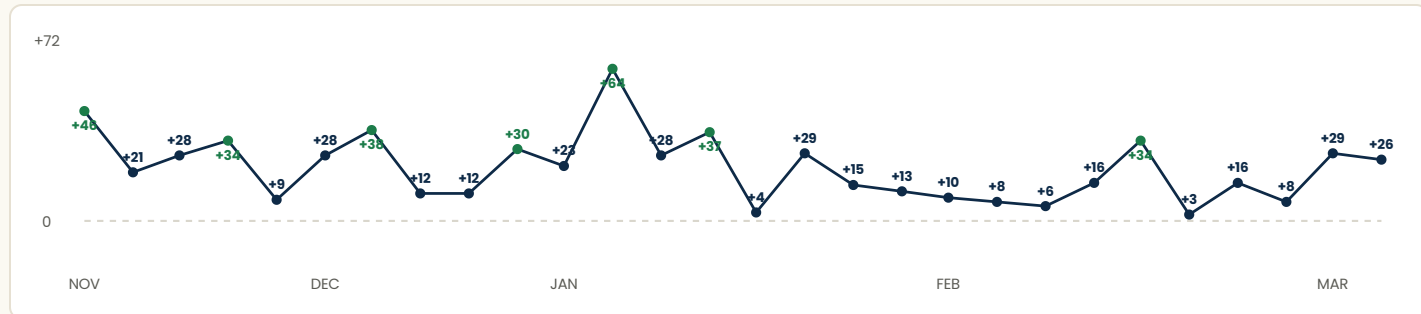


THE PLAYERS · — F · JR · FROM MID-MAJOR B (MID-MAJOR B)

— Forward · archetype profile

<p>SEASON TOTAL PBiR</p> <p><b>+627</b></p> <p>all 28 games added up · +22.4 per game · +0.76 per minute</p>	<p>GAMES HE HURT HIS TEAM</p> <p><b>0</b></p> <p>nights his PBiR finished below zero, of 28</p>	<p>TEAM-BEST PBiR</p> <p><b>13</b></p> <p>nights he led all teammates · best +64, worst +3</p>	<p>BOX SCORE / GAME</p> <p><b>13.0 / 7.9</b></p> <p>points / rebounds per game</p>
--	---	--	--

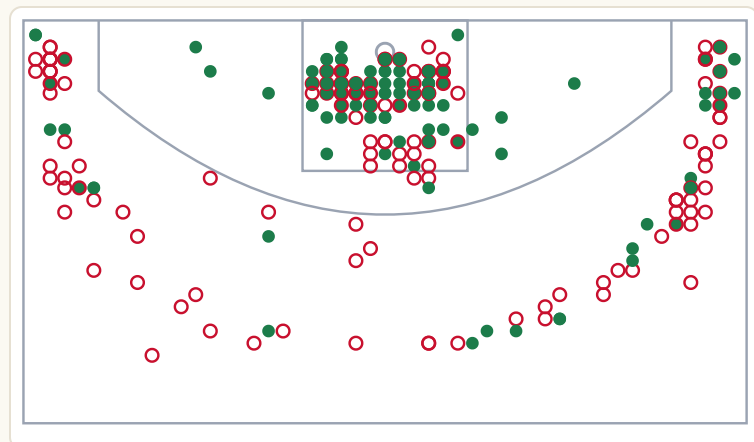
THE SEASON, GAME BY GAME — EACH DOT IS ONE CERTIFIED GAME



Each dot is labeled with his certified PBiR for that game, in order played. The dashed line is zero; **green** = +30 or better, **navy** = a positive night, **red** = below zero. Across all 28 certified games, the line never crosses below zero — the data shows no negative night all season.

**Consistency — the game-to-game read: STEADY** · typical night within ±13.9 of his +22.4 average · #2 most consistent in the class

THE SHOT MAP — • MADE ◦ MISSED



Where the green clusters is where the offense should find him — design his touches to this map.

WHERE HE RANKS IN HIS LEAGUE · MID-MAJOR B

**#8** of 73

RANKED 8th OF THE 73 PLAYERS HE FACED

Of the 73 Mid-Major B players he actually shared the floor with last season (anyone he met at least twice), his certified impact per game ranked 8th. That is the top 90% — the upper tier of everyone he faced.

SHOT SELECTION

162 attempts inside the arc · 108 from three

THE IDENTITY — WHAT BUILT THE NUMBER (SEASON COUNTS)

Scoring #15 Mid-Major B	Rebounding #6 Mid-Major B	Assists #32 Mid-Major B	Made 2s 103	Made 3s 33	Off. reb 72	Def. reb 148	Assists 26	Drawn fouls 60
Blocks 27	Steals 36							

THE VERDICT — THE STEAL OF THE CLASS.

First-team All-Mid-Major, led his prior school in scoring and rebounding — and the engine adds what the press release can't: he never once graded negative.

THE PBiR PROJECTION — HIS CERTIFIED RATE (+0.755/MIN) HELD CONSTANT ACROSS MINUTES

<p>ACTUAL LAST YEAR</p> <p><b>+22.4</b></p> <p>at 29.6 min/game</p>	<p>PBiR IF HE PLAYS 20 MIN</p> <p><b>+15.1</b></p>	<p>PBiR IF HE PLAYS 30 MIN</p> <p><b>+22.7</b></p>	<p>PBiR IF HE PLAYS 35 MIN</p> <p><b>+26.4</b></p>
---	--	--	--

Straight-line projection: certified PBiR/min × minutes — the data's estimate at each workload, not a guarantee. Gold = a jump above his certified usage.

**What the numbers project:** the numbers say a +22.4 producer who never graded negative and led his team 13 times. The certified data already profiles a starter; the only variable the numbers flag is load — his second-half-of-season dip tracks with usage, not ability.



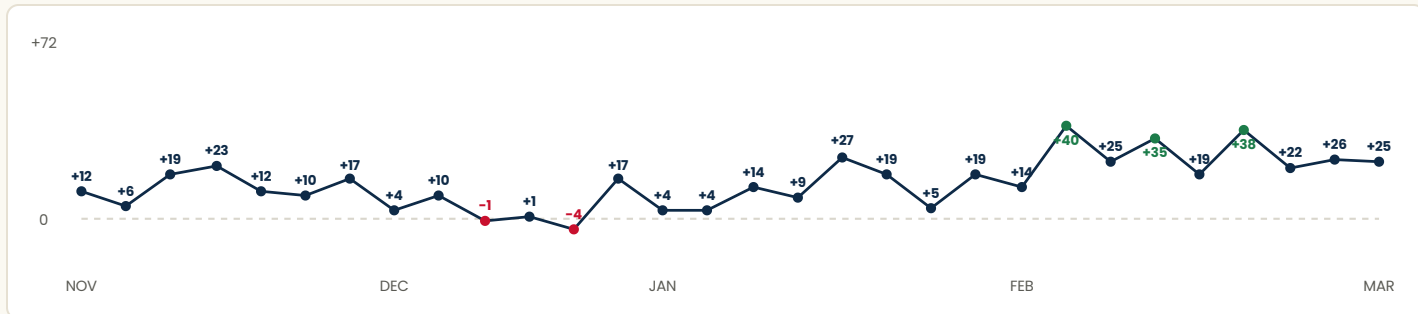
THE PLAYERS · PLAYER C — C · SO · FROM MID-MAJOR C (MID-MAJOR C)

# Player C

— Center · archetype profile

<b>SEASON TOTAL PBiR</b> <b>+471</b> <small>all 30 games added up · +15.7 per game · +0.86 per minute</small>	<b>GAMES HE HURT HIS TEAM</b> <b>2</b> <small>nights his PBiR finished below zero, of 30</small>	<b>TEAM-BEST PBiR</b> <b>3</b> <small>nights he led all teammates · best +40, worst -4</small>	<b>BOX SCORE / GAME</b> <b>4.2 / 5.5</b> <small>points / rebounds per game</small>
---	--	--	--

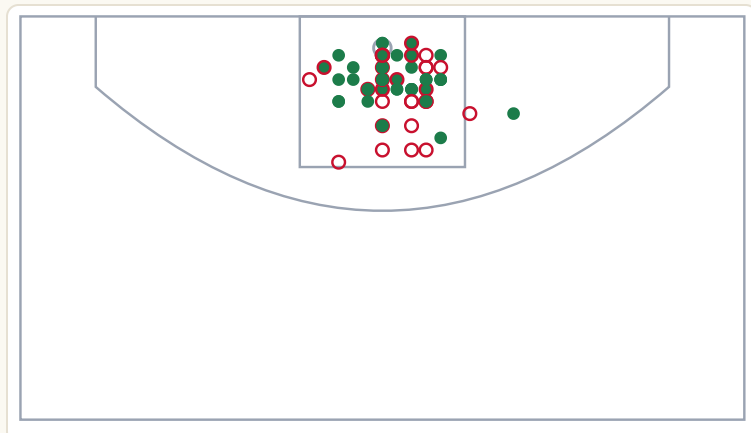
THE SEASON, GAME BY GAME — EACH DOT IS ONE CERTIFIED GAME



Each dot is labeled with his certified PBiR for that game, in order played. The dashed line is zero; **green** = +30 or better, **navy** = a positive night, **red** = below zero. The line dips below zero 2 times in 30 games — the data shows where the cold nights fell.

**Consistency — the game-to-game read: STEADY** · typical night within ±11 of his +15.7 average · #3 most consistent in the class

THE SHOT MAP — ● MADE ○ MISSED



Where the green clusters is where the offense should find him — design his touches to this map.

WHERE HE RANKS IN HIS LEAGUE · MID-MAJOR C

**#9 of 52**

**RANKED 9th OF THE 52 PLAYERS HE FACED**

Of the 52 Mid-Major C players he actually shared the floor with last season (anyone he met at least twice), his certified impact per game ranked 9th. That is the top 85% — the upper tier of everyone he faced.

**SHOT SELECTION**

87 attempts inside the arc · 0 from three

THE IDENTITY — WHAT BUILT THE NUMBER (SEASON COUNTS)

Scoring #34 Mid-Major C	Rebounding #6 Mid-Major C	Assists #29 Mid-Major C	Made 2s 56	Made 3s 0	Off. reb 66	Def. reb 100	Assists 16	Drawn fouls 25
Blocks 32	Steals 12							

**THE VERDICT — THE RATE IS REAL.**

The minutes were limited; the production per minute wasn't — second-best in the class.

THE PBiR PROJECTION — HIS CERTIFIED RATE (+0.863/MIN) HELD CONSTANT ACROSS MINUTES

<b>ACTUAL LAST YEAR</b> <b>+15.7</b> <small>at 18.2 min/game</small>	<b>PBiR IF HE PLAYS 20 MIN</b> <b>+17.3</b>	<b>PBiR IF HE PLAYS 30 MIN</b> <b>+25.9</b>	<b>PBiR IF HE PLAYS 35 MIN</b> <b>+30.2</b>
--	--	--	--

Straight-line projection: certified PBiR/min × minutes — the data's estimate at each workload, not a guarantee. Gold = a jump above his certified usage.

**What the numbers project:** the data shows +0.86 per minute on a limited sample — and a season trajectory that climbed from +8.9 to +22.5. The numbers project that if the minutes scale, the per-minute rate has room to carry; the only unknown the data names is volume, not efficiency.



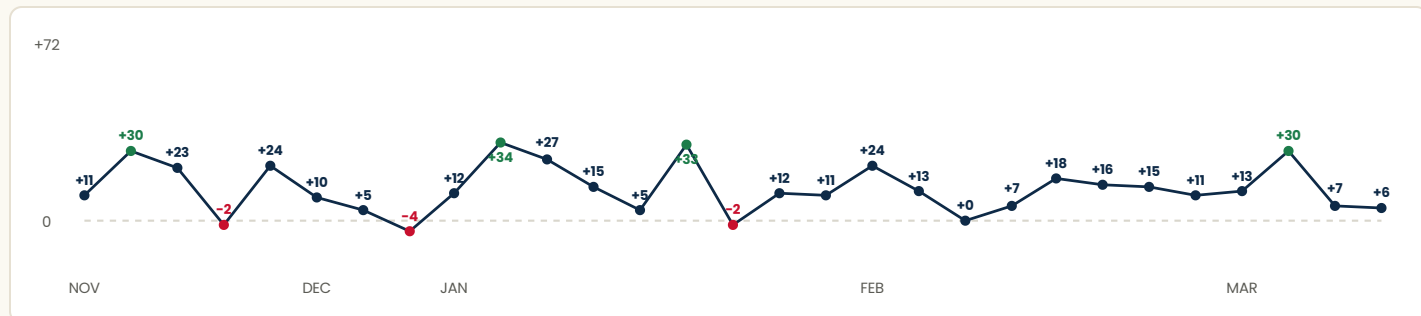
THE PLAYERS · PLAYER D — G · SR · FROM MID-MAJOR D (MID-MAJOR D)

# Player D

— Guard · archetype profile

<b>SEASON TOTAL PBiR</b> <b>+404</b> <small>all 29 games added up · +13.9 per game · +0.44 per minute</small>	<b>GAMES HE HURT HIS TEAM</b> <b>3</b> <small>nights his PBiR finished below zero, of 29</small>	<b>TEAM-BEST PBiR</b> <b>7</b> <small>nights he led all teammates · best +34, worst -4</small>	<b>BOX SCORE / GAME</b> <b>21.0 / 4.3</b> <small>points / rebounds per game</small>
---	--	--	---

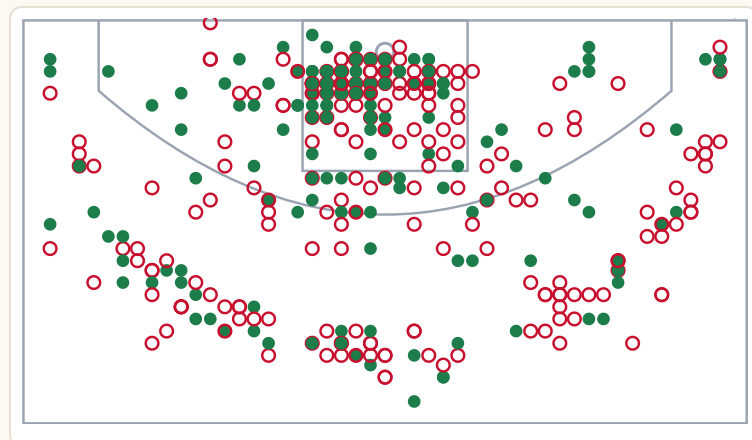
THE SEASON, GAME BY GAME — EACH DOT IS ONE CERTIFIED GAME



Each dot is labeled with his certified PBiR for that game, in order played. The dashed line is zero; **green** = +30 or better, **navy** = a positive night, **red** = below zero. The line dips below zero 3 times in 29 games — the data shows where the cold nights fell.

**Consistency — the game-to-game read: STEADY** · typical night within ±10.4 of his +13.9 average · #4 most consistent in the class

THE SHOT MAP — ● MADE ○ MISSED



Where the green clusters is where the offense should find him — design his touches to this map.

WHERE HE RANKS IN HIS LEAGUE · MID-MAJOR D

## #20 of 92

RANKED 20th OF THE 92 PLAYERS HE FACED

Of the 92 Mid-Major D players he actually shared the floor with last season (anyone he met at least twice), his certified impact per game ranked 20th. The data's honest placement against everyone he played.

**SHOT SELECTION**  
 267 attempts inside the arc · 131 from three

THE IDENTITY — WHAT BUILT THE NUMBER (SEASON COUNTS)

Scoring #1 Mid-Major D	Rebounding #27 Mid-Major D	Assists #7 Mid-Major D	Made 2s 147	Made 3s 44	Off. reb 14	Def. reb 110	Assists 129	Drawn fouls 137
Blocks 9	Steals 30							

**THE VERDICT — A WEAPON, HONESTLY GRADED.**  
 The 20.6 a game is real scoring — and the engine prices it at +13.9 of nightly impact.

THE PBiR PROJECTION — HIS CERTIFIED RATE (+0.441/MIN) HELD CONSTANT ACROSS MINUTES

<b>ACTUAL LAST YEAR</b> <b>+13.9</b> <small>at 31.6 min/game</small>	<b>PBiR IF HE PLAYS 20 MIN</b> <b>+8.8</b>	<b>PBiR IF HE PLAYS 30 MIN</b> <b>+13.2</b>	<b>PBiR IF HE PLAYS 35 MIN</b> <b>+15.4</b>
--	---	--	--

Straight-line projection: certified PBiR/min × minutes — the data's estimate at each workload, not a guarantee. Gold = a jump above his certified usage.

**What the numbers project:** the numbers grade the scoring at +13.9 of certified impact, not the 20.6 the box score shows — volume on a team that lost in its conference final. The data also shows a clear closer pattern (+2.2 first half, +11.7 second); the numbers project his value concentrates late, and rises when the assist rate (4.7/gm) travels with the scoring.



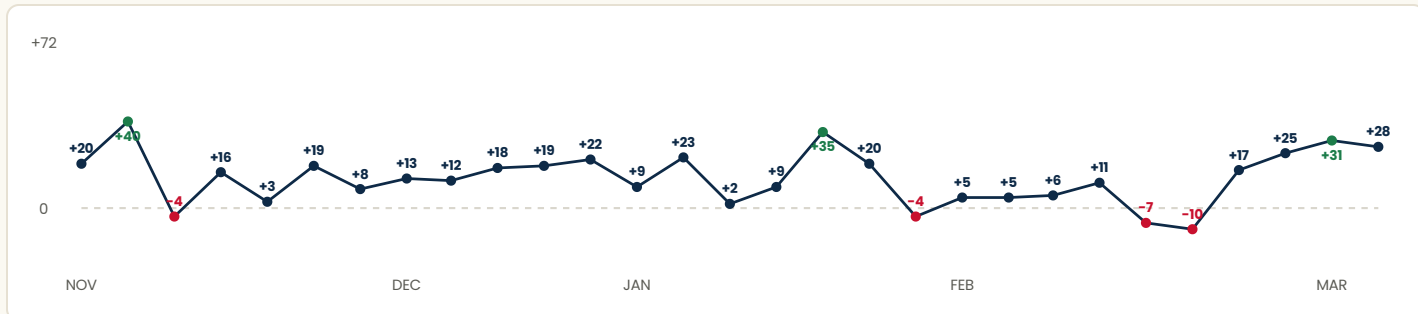
THE PLAYERS · PLAYER E — G · SR · FROM MID-MAJOR E (MID-MAJOR E)

# Player E

— Guard · archetype profile

<b>SEASON TOTAL PBiR</b> <b>+391</b> <small>all 29 games added up · +13.5 per game · +0.41 per minute</small>	<b>GAMES HE HURT HIS TEAM</b> <b>4</b> <small>nights his PBiR finished below zero, of 29</small>	<b>TEAM-BEST PBiR</b> <b>6</b> <small>nights he led all teammates · best +40, worst -10</small>	<b>BOX SCORE / GAME</b> <b>12.8 / 5.1</b> <small>points / rebounds per game</small>
---	--	---	---

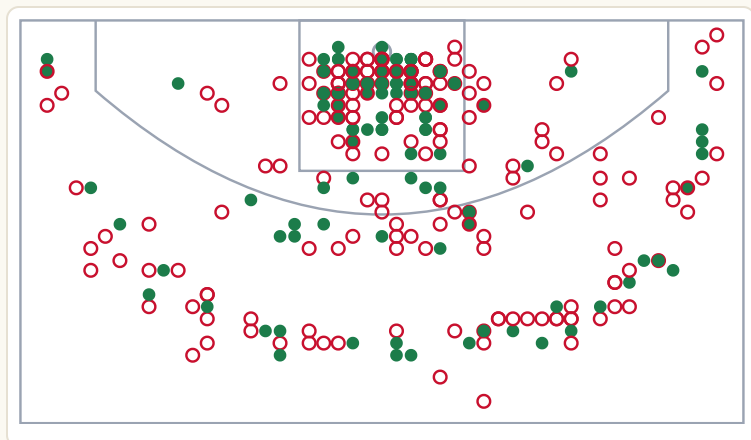
THE SEASON, GAME BY GAME — EACH DOT IS ONE CERTIFIED GAME



Each dot is labeled with his certified PBiR for that game, in order played. The dashed line is zero; **green** = +30 or better, **navy** = a positive night, **red** = below zero. The line dips below zero 4 times in 29 games — the data shows where the cold nights fell.

**Consistency — the game-to-game read: STEADY** · typical night within ±12.1 of his +13.5 average · #5 most consistent in the class

THE SHOT MAP — ● MADE ○ MISSED



Where the green clusters is where the offense should find him — design his touches to this map.

WHERE HE RANKS IN HIS LEAGUE · MID-MAJOR E

## #16 of 61

RANKED 16th OF THE 61 PLAYERS HE FACED

Of the 61 Mid-Major E players he actually shared the floor with last season (anyone he met at least twice), his certified impact per game ranked 16th. The data's honest placement against everyone he played.

**SHOT SELECTION**  
 220 attempts inside the arc · 88 from three

THE IDENTITY — WHAT BUILT THE NUMBER (SEASON COUNTS)

Scoring #12 Mid-Major E	Rebounding #13 Mid-Major E	Assists #7 Mid-Major E	Made 2s 97	Made 3s 30	Off. reb 31	Def. reb 116	Assists 96	Drawn fouls 68
Blocks 10	Steals 41							

**THE VERDICT — THE STEADY PRO.**  
 Third school, no drama in the numbers: +13.5 a game, two-way production, a +40 ceiling night, and only four dips all season.

THE PBiR PROJECTION — HIS CERTIFIED RATE (+0.413/MIN) HELD CONSTANT ACROSS MINUTES

<b>ACTUAL LAST YEAR</b> <b>+13.5</b> <small>at 32.6 min/game</small>	<b>PBiR IF HE PLAYS 20 MIN</b> <b>+8.3</b>	<b>PBiR IF HE PLAYS 30 MIN</b> <b>+12.4</b>	<b>PBiR IF HE PLAYS 35 MIN</b> <b>+14.5</b>
--	---	--	--

Straight-line projection: certified PBiR/min × minutes — the data's estimate at each workload, not a guarantee. Gold = a jump above his certified usage.

**What the numbers project:** the numbers show a +13.5 two-way line with only four negative games and a +40 ceiling — a stable floor that, per the data, swings with team results (+21.7 in wins, +8.4 in losses). The data projects a steady backcourt presence whose output rises alongside the team's.



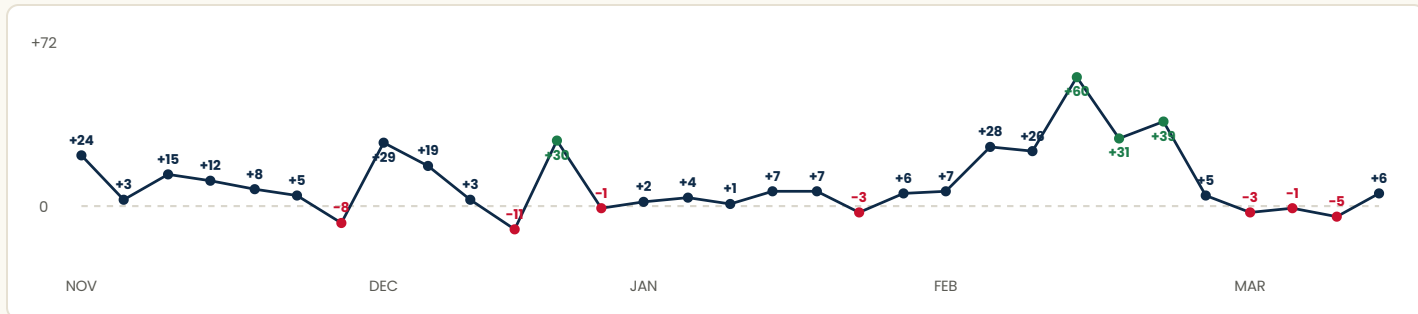
THE PLAYERS · PLAYER F — F · GR · FROM MID-MAJOR F (MID-MAJOR F)

# Player F

— Forward · archetype profile

<b>SEASON TOTAL PBiR</b> <b>+345</b> <small>all 31 games added up · +11.1 per game · +0.57 per minute</small>	<b>GAMES HE HURT HIS TEAM</b> <b>7</b> <small>nights his PBiR finished below zero, of 31</small>	<b>TEAM-BEST PBiR</b> <b>4</b> <small>nights he led all teammates · best +60, worst -11</small>	<b>BOX SCORE / GAME</b> <b>8.4 / 5.1</b> <small>points / rebounds per game</small>
---	--	---	--

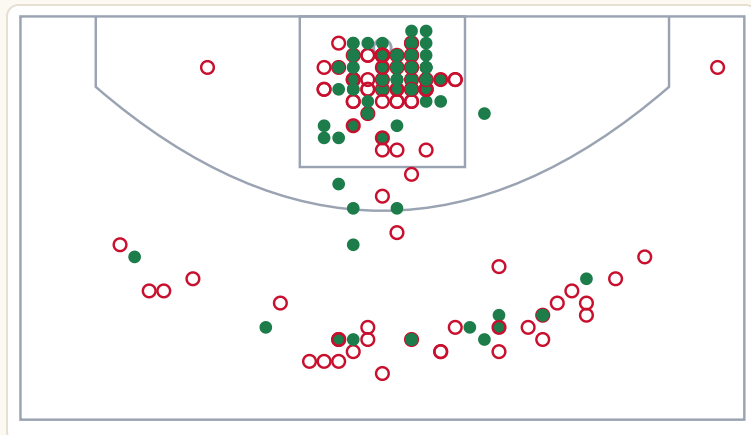
THE SEASON, GAME BY GAME — EACH DOT IS ONE CERTIFIED GAME



Each dot is labeled with his certified PBiR for that game, in order played. The dashed line is zero; **green** = +30 or better, **navy** = a positive night, **red** = below zero. The line dips below zero 7 times in 31 games — the data shows where the cold nights fell.

**Consistency — the game-to-game read: STREAKY** · typical night within ±15.4 of his +11.1 average · #6 most consistent in the class

THE SHOT MAP — ● MADE ○ MISSED



Where the green clusters is where the offense should find him — design his touches to this map.

WHERE HE RANKS IN HIS LEAGUE · MID-MAJOR F

## #15 of 54

**RANKED 15th OF THE 54 PLAYERS HE FACED**

Of the 54 Mid-Major F players he actually shared the floor with last season (anyone he met at least twice), his certified impact per game ranked 15th. The data's honest placement against everyone he played.

**SHOT SELECTION**  
135 attempts inside the arc · 43 from three

THE IDENTITY — WHAT BUILT THE NUMBER (SEASON COUNTS)

Scoring #18 Mid-Major F	Rebounding #7 Mid-Major F	Assists #38 Mid-Major F	Made 2s 74	Made 3s 13	Off. reb 68	Def. reb 90	Assists 28	Drawn fouls 63
Blocks 4	Steals 6							

**THE VERDICT — VETERAN INSURANCE WITH A CEILING.**  
+11.1 a game in a reserve role — with a +60 night that shows what's in there when the matchup tilts his way.

THE PBiR PROJECTION — HIS CERTIFIED RATE (+0.571/MIN) HELD CONSTANT ACROSS MINUTES

<b>ACTUAL LAST YEAR</b> <b>+11.1</b> <small>at 19.5 min/game</small>	<b>PBiR IF HE PLAYS 20 MIN</b> <b>+11.4</b>	<b>PBiR IF HE PLAYS 30 MIN</b> <b>+17.1</b>	<b>PBiR IF HE PLAYS 35 MIN</b> <b>+20</b>
--	--	--	--

Straight-line projection: certified PBiR/min × minutes — the data's estimate at each workload, not a guarantee. Gold = a jump above his certified usage.

**What the numbers project:** the data shows +11.1 in a reserve role with a +60 ceiling game — the numbers project a higher per-minute return than his role allowed, meaning the certified rate suggests more is available if the minutes open.



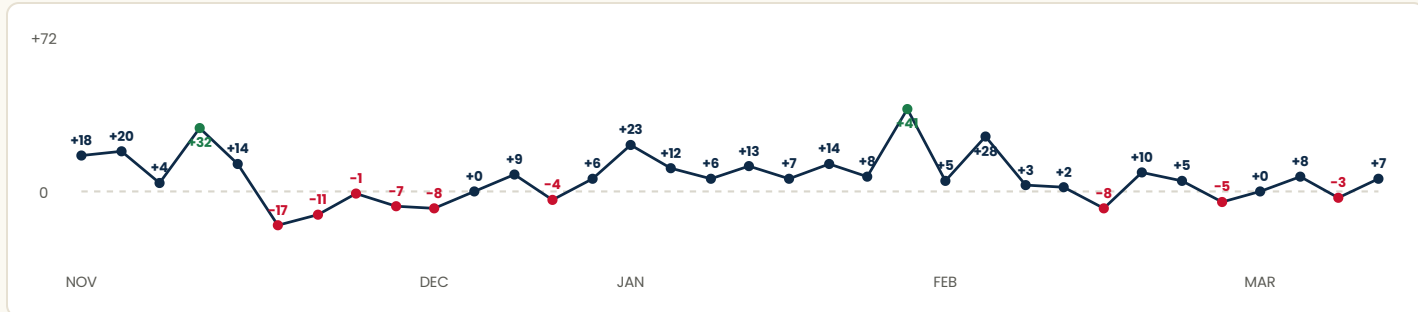
THE PLAYERS · PLAYER G — G · SR · FROM MID-MAJOR B (MID-MAJOR B)

# Player G

— Guard · archetype profile

<b>SEASON TOTAL PBIR</b> <b>+231</b> <small>all 34 games added up · +6.8 per game · +0.18 per minute</small>	<b>GAMES HE HURT HIS TEAM</b> <b>9</b> <small>nights his PBIR finished below zero, of 34</small>	<b>TEAM-BEST PBIR</b> <b>3</b> <small>nights he led all teammates · best +41, worst -17</small>	<b>BOX SCORE / GAME</b> <b>15.9 / 3.1</b> <small>points / rebounds per game</small>
--	--	---	---

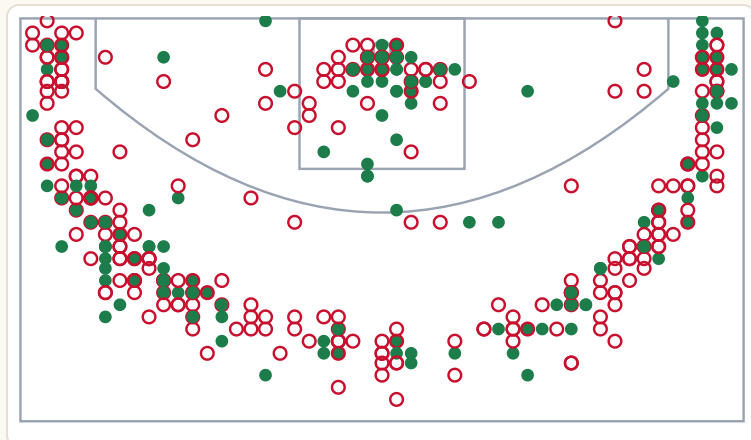
THE SEASON, GAME BY GAME — EACH DOT IS ONE CERTIFIED GAME



Each dot is labeled with his certified PBIR for that game, in order played. The dashed line is zero; **green** = +30 or better, **navy** = a positive night, **red** = below zero. The line dips below zero 9 times in 34 games — the data shows where the cold nights fell.

**Consistency — the game-to-game read: STREAKY** · typical night within ±12.2 of his +6.8 average · #7 most consistent in the class

THE SHOT MAP — ● MADE ○ MISSED



Where the green clusters is where the offense should find him — design his touches to this map.

WHERE HE RANKS IN HIS LEAGUE · MID-MAJOR B

## #29 of 68

RANKED 29th OF THE 68 PLAYERS HE FACED

Of the 68 Mid-Major B players he actually shared the floor with last season (anyone he met at least twice), his certified impact per game ranked 29th. The data's honest placement against everyone he played.

**SHOT SELECTION**  
 103 attempts inside the arc · 286 from three

THE IDENTITY — WHAT BUILT THE NUMBER (SEASON COUNTS)

Scoring #5 Mid-Major B	Rebounding #34 Mid-Major B	Assists #29 Mid-Major B	Made 2s 51	Made 3s 99	Off. reb 18	Def. reb 87	Assists 31	Drawn fouls 92
Blocks 18	Steals 40							

**THE VERDICT — THE SWING PIECE.**  
 99 threes and a +41 night against real competition — alongside nine negative games and a -17. The variance is the profile.

THE PBIR PROJECTION — HIS CERTIFIED RATE (+0.184/MIN) HELD CONSTANT ACROSS MINUTES

<b>ACTUAL LAST YEAR</b> <b>+6.8</b> <small>at 36.9 min/game</small>	<b>PBIR IF HE PLAYS 20 MIN</b> <b>+3.7</b>	<b>PBIR IF HE PLAYS 30 MIN</b> <b>+5.5</b>	<b>PBIR IF HE PLAYS 35 MIN</b> <b>+6.5</b>
---	---	---	---

Straight-line projection: certified PBIR/min × minutes — the data's estimate at each workload, not a guarantee. Gold = a jump above his certified usage.

**What the numbers project:** the numbers show the widest swing in the class — a +41 high and a -17 low with nine negative games. The data projects high variance as his stable trait: the certified pattern says he wins games he's hot in, and the negative-game rate is what the numbers flag to plan around.



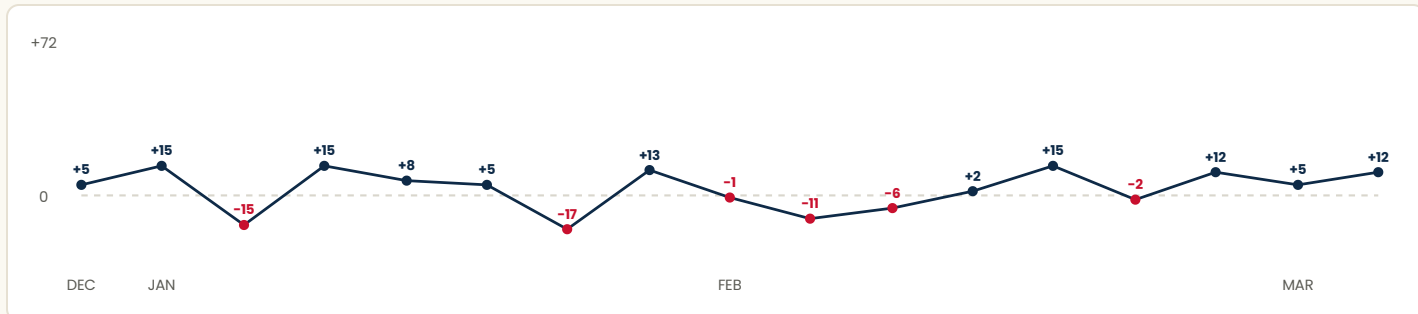
THE PLAYERS · PLAYER H — F · SR · FROM MID-MAJOR G (MID-MAJOR G)

# Player H

— Forward · archetype profile

<b>SEASON TOTAL PBIR</b> <b>+55</b> <small>all 17 games added up · +3.2 per game · +0.12 per minute</small>	<b>GAMES HE HURT HIS TEAM</b> <b>6</b> <small>nights his PBIR finished below zero, of 17</small>	<b>TEAM-BEST PBIR</b> <b>0</b> <small>nights he led all teammates · best +15, worst -17</small>	<b>BOX SCORE / GAME</b> <b>9.0 / 2.2</b> <small>points / rebounds per game</small>
---	--	---	--

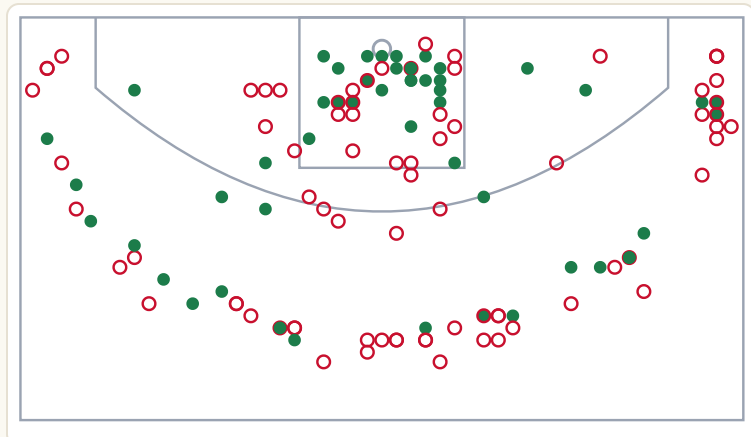
THE SEASON, GAME BY GAME — EACH DOT IS ONE CERTIFIED GAME



Each dot is labeled with his certified PBIR for that game, in order played. The dashed line is zero; **green** = +30 or better, **navy** = a positive night, **red** = below zero. The line dips below zero 6 times in 17 games — the data shows where the cold nights fell.

**Consistency — the game-to-game read: STREAKY** · typical night within ±10.2 of his +3.2 average · #8 most consistent in the class

THE SHOT MAP — ● MADE ○ MISSED



Where the green clusters is where the offense should find him — design his touches to this map.

WHERE HE RANKS IN HIS LEAGUE · MID-MAJOR G

## #34 of 56

RANKED 34th OF THE 56 PLAYERS HE FACED

Of the 56 Mid-Major G players he actually shared the floor with last season (anyone he met at least twice), his certified impact per game ranked 34th. The data's honest placement against everyone he played.

**SHOT SELECTION**  
 60 attempts inside the arc · 67 from three

THE IDENTITY — WHAT BUILT THE NUMBER (SEASON COUNTS)

Scoring #22 Mid-Major G	Rebounding #40 Mid-Major G	Assists #10 Mid-Major G	Made 2s 30	Made 3s 20	Off. reb 9	Def. reb 29	Assists 39	Drawn fouls 21
Blocks 3	Steals 2							

**THE VERDICT — THE BURIED YEAR.**  
 Seventeen games played at his prior school after an All-Mid-Major season at his prior school — the certified sample says role player; the résumé says there's more.

THE PBIR PROJECTION — HIS CERTIFIED RATE (+0.116/MIN) HELD CONSTANT ACROSS MINUTES

<b>ACTUAL LAST YEAR</b> <b>+3.2</b> <small>at 28 min/game</small>	<b>PBIR IF HE PLAYS 20 MIN</b> <b>+2.3</b>	<b>PBIR IF HE PLAYS 30 MIN</b> <b>+3.5</b>	<b>PBIR IF HE PLAYS 35 MIN</b> <b>+4</b>
---	---	---	---

Straight-line projection: certified PBIR/min × minutes — the data's estimate at each workload, not a guarantee. Gold = a jump above his certified usage.

**What the numbers project:** the certified sample is 17 games at +3.2 — the numbers caution this is a thin, crowded-rotation year, not a full read. His prior All-Mid-Major season (15.7 ppg at his prior school) sits outside this data; the numbers here project depth, with the résumé suggesting unmeasured upside.



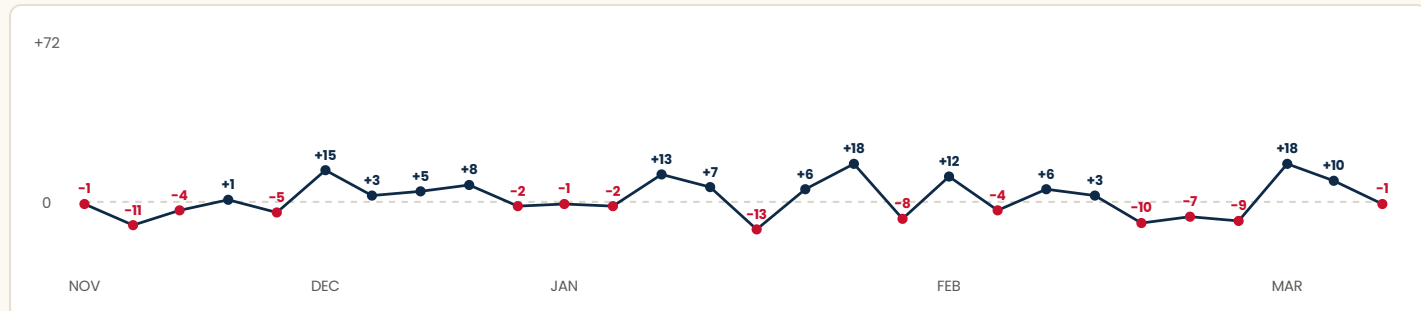
THE PLAYERS · PLAYER I — G · SR · FROM MID-MAJOR H (MID-MAJOR H)

# Player I

 — Guard · archetype profile

<b>SEASON TOTAL PBIR</b> <b>+47</b> <small>all 28 games added up · +1.7 per game · +0.08 per minute</small>	<b>GAMES HE HURT HIS TEAM</b> <b>14</b> <small>nights his PBIR finished below zero, of 28</small>	<b>TEAM-BEST PBIR</b> <b>0</b> <small>nights he led all teammates · best +18, worst -13</small>	<b>BOX SCORE / GAME</b> <b>5.7 / 2.0</b> <small>points / rebounds per game</small>
---	---	---	--

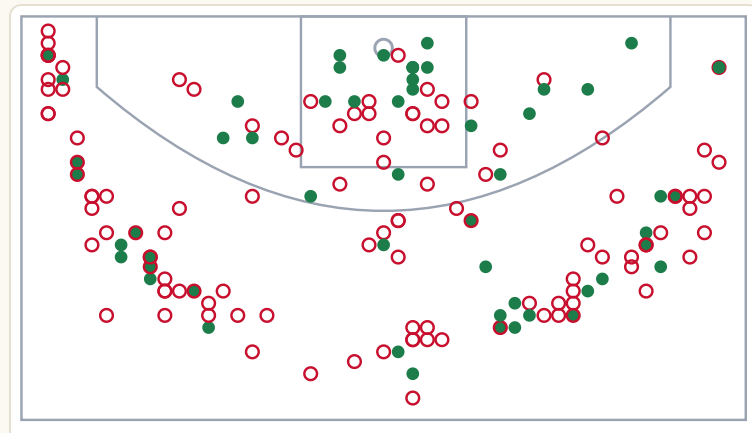
THE SEASON, GAME BY GAME — EACH DOT IS ONE CERTIFIED GAME



Each dot is labeled with his certified PBIR for that game, in order played. The dashed line is zero; **green** = +30 or better, **navy** = a positive night, **red** = below zero. The line dips below zero 14 times in 28 games — the data shows where the cold nights fell.

**Consistency — the game-to-game read: STREAKY** · typical night within ±8.6 of his +1.7 average · #9 most consistent in the class

THE SHOT MAP — ● MADE ○ MISSED



Where the green clusters is where the offense should find him — design his touches to this map.

WHERE HE RANKS IN HIS LEAGUE · MID-MAJOR H

## #49 of 55

RANKED 49th OF THE 55 PLAYERS HE FACED

Of the 55 Mid-Major H players he actually shared the floor with last season (anyone he met at least twice), his certified impact per game ranked 49th. The data's honest placement against everyone he played.

**SHOT SELECTION**  
65 attempts inside the arc · 102 from three

THE IDENTITY — WHAT BUILT THE NUMBER (SEASON COUNTS)

- Scoring #39 Mid-Major H
- Rebounding #38 Mid-Major H
- Assists #15 Mid-Major H
- Made 2s 27
- Made 3s 29
- Off. reb 16
- Def. reb 40
- Assists 54
- Drawn fouls 11
- Blocks 1
- Steals 23

**THE VERDICT — THE CONNECTOR, TOLD HONESTLY.**  
+1.7 a game across 28 games — a pass-first guard whose value lives in fewer graded events than any other archetype.

THE PBIR PROJECTION — HIS CERTIFIED RATE (+0.083/MIN) HELD CONSTANT ACROSS MINUTES

<b>ACTUAL LAST YEAR</b> <b>+1.7</b> <small>at 20.2 min/game</small>	<b>PBIR IF HE PLAYS 20 MIN</b> <b>+1.7</b>	<b>PBIR IF HE PLAYS 30 MIN</b> <b>+2.5</b>	<b>PBIR IF HE PLAYS 35 MIN</b> <b>+2.9</b>
---	---	---	---

Straight-line projection: certified PBIR/min × minutes — the data's estimate at each workload, not a guarantee. Gold = a jump above his certified usage.

**What the numbers project:** the numbers show +1.7 across 28 games — the lowest certified line among the rotation additions. The data is honest about the archetype: a pass-first guard scores fewer graded events, so the certified number reads depth, and the projection holds there until a larger on-ball sample says otherwise.



THE PLAYERS · PLAYER J — G · SO · FROM HIGH-MAJOR (HIGH-MAJOR)

# Player J

 — Guard · archetype profile

**The honesty box:** fourteen appearances, 35 total minutes, -6 certified — behind a rotation that played for the national championship. There is no certified season here, and this report will not invent one.

CERTIFIED GAMES

14

played, of 40 certified

CERTIFIED TOTAL

-6

-0.4 per game

THE CALL

Scout the player,  
not this sample

THE VERDICT — NO BODY OF WORK & M DASH; ON PURPOSE.

Fourteen games, 35 total minutes behind a national-runner-up rotation. The engine certifies the games; it refuses to pretend that's a season.

**What the numbers project:** the data is 35 total minutes — the numbers make no projection, because there isn't a sample to project from. The certified record stands as-is; any read on him has to come from film and recruiting evaluation, which this report does not substitute for.



**PART 4 · THE ROSTER  
ASSEMBLED**

**THE LEAGUE STANDINGS, THE CRYSTAL BALL & THE CLOSE · PAGES  
16–22**

**THE LEAGUE STANDING — THE PAGE NOBODY ELSE CAN PRINT**

# The League Standing

 — ranked against every man they faced

Here is what this page does, and why no one else can: the engine took every player and ranked him against **every other league player he actually shared the floor with** in his certified conference games (anyone he met at least twice) — all on one yardstick, certified PBIR per game. **It is a head-to-head ranking built only from players we truly have possessions for — never a guess.**

**How to read each row: LEAGUE RANK** = where he finished (e.g. #2 = second-best). **PLAYERS HE FACED** = how many league players were in that ranking pool (e.g. 74 means he was measured against 74 opponents and teammates he actually played). So “#2 of 74” means **second-best out of the 74 players he shared the floor with** — not 74th, near the top.

PLAYER (LEAGUE)	LEAGUE RANK	PLAYERS HE FACED	LEAGUE PBIR/GM	BETTER THAN
<b>Player A</b> (Mid-Major A)	<b>#2</b>	74	+34.6	99% of them
(Mid-Major B)	<b>#8</b>	73	+20.4	90% of them
<b>Player C</b> (Mid-Major C)	<b>#9</b>	52	+20.3	85% of them
<b>Player D</b> (Mid-Major D)	<b>#20</b>	92	+14.6	79% of them
<b>Player E</b> (Mid-Major E)	<b>#16</b>	61	+11.9	75% of them
<b>Player F</b> (Mid-Major F)	<b>#15</b>	54	+12.1	74% of them
<b>Player G</b> (Mid-Major B)	<b>#29</b>	68	+8.8	59% of them
<b>Player H</b> (Mid-Major G)	<b>#34</b>	56	+3.0	41% of them
<b>Player I</b> (Mid-Major H)	<b>#49</b>	55	+2.2	13% of them

**THE LINE THAT EARNS THE MEETING**

**Player A graded #2 of 74 Mid-Major players — as a freshman.**

**The Read:** three of your additions finished top-ten of their entire leagues by certified impact — Player A (#2, Mid-Major), (#8, Mid-Major), and Player C (#9, Mid-Major) — and two of those three are the names the press releases barely mentioned. The rankings price each league honestly: Player D' #20 of 92 in the



## THE CRYSTAL BALL — THE SPLITS THAT TELL YOU WHAT'S COMING

# The Crystal Ball — closers, metronomes, and a rocket

Every split below is read the same way: the **arrow goes from his first-half number to his second-half number** — either within a single game (1st half vs 2nd half) or across the season (first half of the schedule vs second half). All values are certified PBiR per game. The patterns are last season's data; they describe tendencies, not guarantees.

THE PATTERN	THE CERTIFIED SPLIT	WHAT THE STAFF DOES WITH IT
<b>Player D is a closer</b>	<b>within game: 1st half +2.2 → 2nd half +11.7 PBiR per game</b>	The data shows ~84% of his nightly impact lands after halftime — the numbers point to a second-half producer
<b>The backcourt closes</b>	<b>Player E: 1st half +4.6 → 2nd half +8.7 · Player G: 1st half +0.7 → 2nd half +6.1 (PBiR per game)</b>	The data shows both guards nearly double their impact after halftime — a certified finishing pair
<b>Player A is a metronome</b>	<b>within game: 1st half +16.5, 2nd half +16.3 · across season: 1st half +31.9 → 2nd half +33.9</b>	The numbers show no fade in either split — the data points to a player you can leave on the floor
<b>Player C was a rocket in flight</b>	<b>season halves: first half +8.9 → second half +22.5 · Jan onward +20.3 PBiR/gm</b>	The data shows his per-game impact climbing all season — the trajectory points up, not flat
<b>'s load flag</b>	<b>season halves: first half +29.3 → second half +15.5 PBiR/gm (carried his prior school's usage)</b>	The numbers show a second-half-of-season dip that tracks with his heavy usage — the data flags load, not decline
<b>Value beyond the scoreboard</b>	<b>in losses: Player A still +23.4 · Player E +21.7 in wins vs +8.4 in losses (PBiR/gm)</b>	The data shows one holds his number regardless of result; the other's rises with the team

**The architecture the data hands you:** the frontcourt sustains and the backcourt closes. Bigs control the first half; guards finish the second. That's not a theory — it's the certified pattern of every season in this class, visible in June, before a single practice. (One anplayer csis remains honestly out of reach of this edition: true stint-length conditioning — production by consecutive minutes on the floor — which requires parsing the substitution logs. It's named here so nobody mistakes its absence for an answer.)

**Plain-language note:** splits describe last season's certified pattern; they anticipate tendencies, never outcomes. **Information only. You make the call.**



## THE ROSTER ASSEMBLED — THE CLASS AS ONE BODY OF WORK

# The Roster Assembled — 6,828 certified events of identity

Add all ten certified seasons together and the class has a shape. These are the combined season counts — the raw identity of what a high-major program acquired.



## WHERE THE CERTIFIED IMPACT CONCENTRATES

THE UNIT	CERTIFIED PROFILE	THE READ
The frontcourt	Player A + Player C + Player F = +2,463 combined	The quiet shock of the class: 69% of its certified impact lives up front — the opposite of the "guards-and-shooting" headline
The backcourt	Player D + Player E + Player G + Player I = +1,073	Real and varied — a scorer, a steady two-way, a swing shooter, a connector — but the certified engine room is not out here
The wild cards	Player J, , , Player H — thin or no certified samples	Four bets on development — named as bets, which is what an honest intake does

**The Read:** the narrative says the head coach built a guard-heavy shooting roster. The certified possessions say he built something better disguised: **a frontcourt-driven roster wearing a backcourt's press clippings.** If the staff's internal plan matches the headlines instead of the possessions, this page is the correction — and it arrived before the first practice.



## THE HONEST HOLES — WHAT THE CERTIFIED CLASS DOES NOT SOLVE

# The Honest Holes — named, not hidden

THE HOLE	THE CERTIFIED EVIDENCE	THE MITIGATION ON THE ROSTER
Proven ACC-level size	Every certified season came against mid-major length; Player C's sample is one limited year	Player A's glass dominance is the most level-portable skill in the class — and Player C's rate earns the experiment
The primary ballhandler	No certified season here profiles as a lead guard's; Player I's connector sample is thin, Player D is a scorer	Player E's two-way steadiness is the bridge; the freshman class and Player J's passing book are the upside bets
Shooting reliability	Player G's 9 negative games; Player D' volume profile; class-wide 3-point counts modest outside those two	Volume exists — the question is variance. Roles, not talent, are the lever
Certified experience together	Ten programs, ten systems, zero shared possessions — the one thing no engine can grade yet	An older roster by design: five seniors/grads who've started over before

**Why this page exists:** an intake report that only sells you on your own class is a brochure. The holes above are real, certified, and — critically — **known in June instead of discovered in January.** Every one of them has a lever already on the roster. That's the difference between a hole and a surprise.



THE ANTICIPATED READ — ONE PAGE, FORWARD · INFORMATION ONLY

# What the Numbers Anticipate — if the certified patterns hold

This page projects **tendencies, not outcomes** — no records, no standings, no promises. Six anticipations, each traced to certified evidence in this report.

WHAT TO ANTICIPATE	THE BASIS	CONFIDENCE READ
<b>Player A arrives ready</b>	<b>0 negative games · +1.06/min as a freshman</b>	Floor-based traits travel best across levels — the strongest pattern in the class
<b>outplays his billing</b>	<b>+22.4/gm, never negative, led his team 13 times</b>	Consistency at his size is system-independent
<b>The frontcourt leads the team</b>	<b>69% of the class's certified impact is up front</b>	Strong — unless minutes are allocated to the headlines instead of the possessions
<b>Player D' efficiency dips before his value does</b>	<b>volume profile vs new length; +0.44/min baseline</b>	The shots get harder in the ACC; the playmaking growth (4.7 apg) is the adaptation path
<b>Player G swings games both ways</b>	<b>+41 / -17 band, 9 negative nights</b>	The variance is the most stable thing about him — plan rotations for it
<b>The five spot stays the watch item</b>	<b>Player C's elite rate on a thin sample</b>	The bet is honest and worth making — with Player F and Player A as the hedge

**How to use this page:** these are anticipations drawn from one certified season per man, all against pre-ACC competition. Rosters are chemistry, health, and coaching as much as possessions. What the data earns is a head start — the patterns above are where the season's first answers will come from. **Information only. You make the call.**

## THE ONE-LINE ANTICIPATION

The headlines bought a scorer. The possessions bought a frontcourt.



## THE SPOKEN INTAKE SUMMARY

# The Spoken Summary — the class in a coach's voice

### THE WHOLE REPORT, OUT LOUD

Here's the truth of the class you built, every possession graded. Ten new players, ten prior programs, three hundred fourteen certified games — all of them measured by one engine, one yardstick, so for the first time this class can actually be compared.

The headline finding: your crown jewel is Player A. The his prior school freshman put up a season the engine almost never sees — thirty-three a night of certified impact, led his team twenty times, and **not one negative game all year**. And the steal is — twenty-two a night, led his prior school thirteen times, and he never graded negative either. Two floor-never-cracks seasons in one portal haul.

Player D — the name everybody knows — certifies as a real weapon, honestly priced: fourteen a night of impact, not twenty. Player C's minutes were limited but his rate was second-best in the class — the center answer may already be in the building. Player G swings, Player E steadies, Player F insures, and the thin samples are told as thin samples, because that's the product.

**The bottom line:** the press conference sold a backcourt. The possessions bought a frontcourt. Sixty-nine percent of this class's certified impact lives up front — and knowing that in June, before the first practice, is the whole reason this report exists.



THE CLOSING PAGE · THE CERTIFICATION LEDGER — EVERYTHING RECONCILED

# The Certification Ledger — 314 of 336 games, gates green

Every number in this report comes only from games that passed full certification — box reconcile, points tie, shot profile — against the official record of ten different programs. Games that did not pass are counted below and excluded, never blended in.

PLAYER	GAMES CERTIFIED	PLAYED	CERTIFIED PBiR	PER GAME	WITHHELD
Player A	33/34	31	+1,020	+32.9	1
	29/33	28	+627	+22.4	4
Player C	30/32	30	+471	+15.7	2
Player D	29/34	29	+404	+13.9	5
Player E	29/31	29	+391	+13.5	2
Player F	33/35	31	+345	+11.1	2
Player G	34/34	34	+231	+6.8	—
Player H	28/32	17	+55	+3.2	4
Player I	29/31	28	+47	+1.7	2
Player J	40/40	14	-6	-0.4	—

**What the certified PBiR says in one look:** 69% of the class's +3,585 lives in the frontcourt; Player A (+1,020) and (+627) are the only zero-negative seasons; Player C's +0.86/min projects to +25.9 at 30 minutes — the data's clearest "more available" flag. Withheld = unresolved feed mismatches, excluded never blended; Player J's 35 minutes carry no projection — the data refuses to invent one.

THE CLASS, BY THE NUMBERS

**+3,585**  
combined certified impact

**2**  
zero-negative seasons

**10**  
programs, one yardstick

**JUNE**  
not January

**Why this report exists:** every staff in America rebuilt through the portal this spring, and every one of them is planning a season on film and averages. This staff is the first to hold its class's actual possessions — certified, compared, and honest about what they don't show. The box scores said you signed a scorer. The possessions say you signed a frontcourt. One of those is a headline. The other is a head start.

Built entirely from official box scores and play-by-play across ten programs. The Anticipated page projects tendencies only — information only; you make the call. Not affiliated with or endorsed by the no Mid-Major-level or any school. All marks belong to their respective owners.